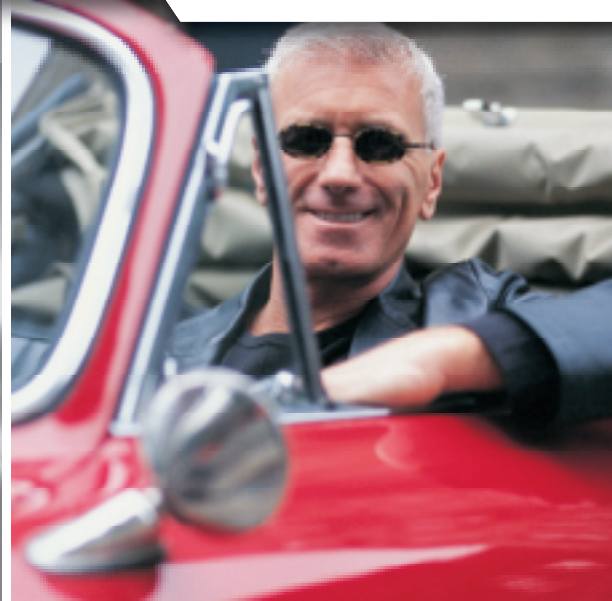


ELITE SERIES

3575

3/4 HP Chain Drive
Garage Door Opener



THE QUIETEST 3/4 HP CHAIN DRIVE ON THE MARKET.

For those who desire improved quiet and a strong boost in power, as well as the reliable reputation of chain drive systems, the 3575 difference is clear.

A finely tuned, yet ruggedly designed 3/4 HP motor, combined with our patented MVIS® system, provides the precise synergy needed to open doors quietly and quickly. The large, powerful motor designed specifically for the 3575 provides steady performance and lifting power to quickly and safely open even the heaviest garage doors. All this, with the dependability LiftMaster® chain drives have made famous.

- 200-watt lighting
- Meets all UL325 requirements
- Lifetime motor warranty

LiftMaster®, the only professionally installed openers with 3/4 HP strength.

ACCESSORIES INCLUDED



Premium Remote

Innovative design automatically streams brilliant blue lights from the push-button windows when you pass your hand over the remote.



Smart Control Panel™

Displays time, temperature and diagnostic messages in 3 languages. A motion sensor turns opener lights on "hands-free" and a convenient "learn" button easily programs remotes.

At Chamberlain, safety is a major part of our mission.

It's our commitment to you and, quite simply, the way we produce products every day. Our LiftMaster® products are designed to move the largest door in your home, safely, securely and by always putting safety first.

CHAMBERLAIN®

LiftMaster®

ELITE SERIES™

UNSURPASSED SAFETY AND SECURITY

All LiftMaster® garage door openers are manufactured with the highest level of safety and monitoring systems to ensure safe operation.

- The Protector System® safety sensors reverse the door automatically if the infrared beam is broken, before contact is made.
- Patented technology detects when a door spring breaks and triggers the motor to reverse the door to the full open position.
- Sensing technology will stop the door from closing if contact is made with a person or object.
- Security+® Rolling Code Technology assures a new code is sent every time the remote is used.
- Patented PosiLock® system ensures the door remains securely locked when it is closed.
- Opener light turns on automatically when The Protector System® safety infrared beam is broken.

ENHANCE YOUR LIFESTYLE WITH OPTIONAL ACCESSORIES



know for sure the door is closed

Lets you know whether the garage door is open or closed from any room in the house. A flashing red light shows the door is open; a glowing green light indicates the door is closed.

GARAGE DOOR MONITOR (915LM)

enter without a key

Open your garage door without using a remote control and close with just the push of a button. Also can be programmed with a temporary entry code for friends and service people.

WIRELESS KEYLESS ENTRY with SECURITY+® (377LM)



access on the go

Operates up to 3 garage doors. Turns garage door opener lights on and off. Fits on keychain or in a pocket or purse.

MINI 3-BUTTON REMOTE CONTROL with SECURITY+® (370LM)

put control where you want it

For people who want a second control in their garages. A light control button turns garage door opener lights on and off. Auxiliary button can be programmed to open and close a second garage door.

WIRELESS CONTROL PANEL (378LM)



park perfectly every time

The high-tech solution that helps you park perfectly in your garage! As you pull into your garage the laser is activated and projected onto the dashboard, making it easy to park in the same spot every time.

LASER GARAGE PARKING ASSIST (975LM)



STANDARD SPECIFICATIONS

DIMENSIONS

Installed Length: 122 3/4"
Maximum Door Opening: 7' 6"*
Headroom Clearance Required: 2"
*Up to 10' with optional 8' or 10' rails

CARTONS

Number of Cartons: 2
Carton 1 Dimensions and Contents:
20" x 11 7/8" x 10 3/16"
Smart Control Panel™
373P Premium 3-Button Remote Control
Garage Door Opener Head
The Protector System®

Carton 2 Dimensions and Contents:
10' 4" x 5" x 5"
Assembled Solid-Steel T-Rail

SECURITY+® RADIO CONTROLS

Coding System: Smart Receiver
Code Button and Indicator Light
373P Premium 3-Button Remote Control
Operating Range: 150' (approximately)
Operating Temperature: -40°F to 150°F
Frequency: 315MHz
Security+® Anti-Burglary Coding

CONVENIENCE/SAFETY

The Protector System®
Emergency/Quick Release
Automatic Trolley Reconnect
Ventilation/Pet Opening
Down Safety Reverse
Up Safety Stop
Door Open/Beam Obstructed/Lights On
Program Remote Controls from Smart Control Panel™
PosiLock®

ELECTRICAL SPECIFICATIONS

POWER

Voltage: 120V AC, 60Hz; Wattage: 540; Current Rating: 5.0
UL Listings: Yes; Length of Line Cord: 6' (3-prong)

LOGIC TYPE

Solid-State Microcontroller with Built-in Surge Suppressor

LIGHTING

Number of Bulbs: 2
Maximum Wattage: 100 x 2
Adjustable time, Solid-State Delay

MECHANICAL SPECIFICATIONS

MOTOR

3/4 HP; RPM: 1,625
Thermal Protection: Automatic
Lubrication: Permanent

DRIVE MECHANISM

Drive Means: Full Chain
Reduction Means: Gear 16:1
Door Linkage: Adjustable Door Arm

ADJUSTMENTS

Force: Independent External Up and Down
Limit: External

TRAVEL RATE

Approximately 9" per Second

SHIPPING WEIGHTS

Head: 26 Lbs.
Rail: 17 Lbs.

MATERIALS

Chassis: Steel
Rail: Solid-Steel T
Trolley: Steel

LIFETIME MOTOR WARRANTY

5 years on all other parts. For more information, refer to owner's manual. LiftMaster® garage door openers meet all current state and federal regulations and UL safety regulations as of date of manufacture.



The in-vehicle universal remote control. See your automobile dealer for availability.

CHAMBERLAIN®
LiftMaster
ELITE SERIES™

World's #1 Installed Garage Door Opener
THE CHAMBERLAIN GROUP, INC.
845 Larch Avenue • Elmhurst, IL 60126
www.liftmaster.com



WARNING: Garage doors and openers can be dangerous if not properly installed, tested and operated. Children should be supervised by an adult whenever in or around the garage area.

©2007 LM 3575 06/07
The Chamberlain Group, Inc.
Printed in U.S.A.

LMCA0575